

## MARINE ELECTRIC TRIM

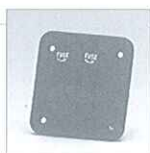
Is a new concept of trim tab system.

It consists of a revolutionary electro-mechanical system.

It is powerful, precise, trouble free and compared to the hydraulic model doesn't need a constant service of maintenance and expensive installation.

Amp. Draw.: 5.5 A. at 12 V.

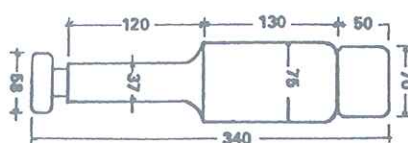
2.5 A. at 24 V.



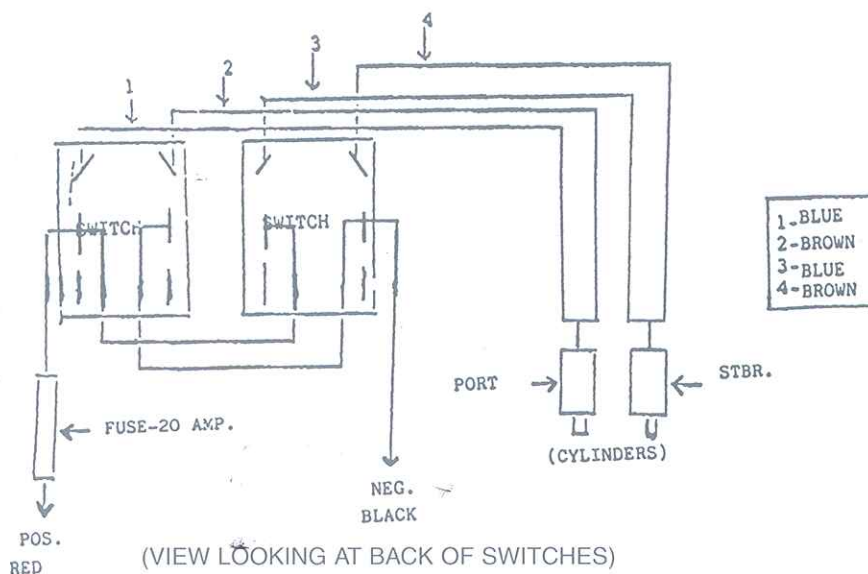
CD. 30000812 CYLINDER 12 V.  
 CD. 30000824 CYLINDER 24 V.  
 CD. 30000912 CYLINDER PAIR 12 V.  
 CD. 30000924 CYLINDER PAIR 24 V.  
 CD. 31000912 ELECTRIM 9 x 12"

CD. 30000916 ELECTRIM 9 x 16"  
 CD. 30000922 ELECTRIM 9 x 22"  
 CD. 30001212 ELECTRIM 12 x 12"  
 CD. 30001218 ELECTRIM 12 x 18"  
 CD. 30000911 CONTROL TRIM

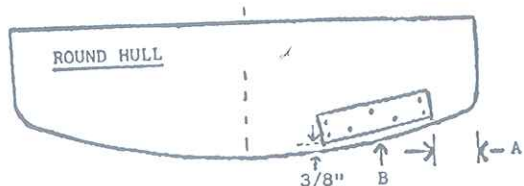
### DIMENSIONS



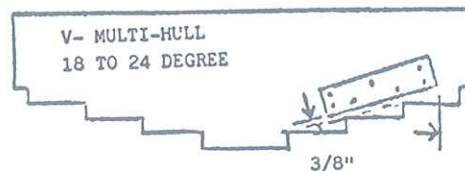
### ELECTRICAL WIRING



### INSTALLATION SCHEME



ROUND HULL  
 (A) Position so as little of hull is under tab. Must maintain 3/8" clearance.



V- MULTI-HULL  
 Must maintain 3/8" DIM.  
 or MAX. of 1/2"

